

ICE USAGE GUIDE

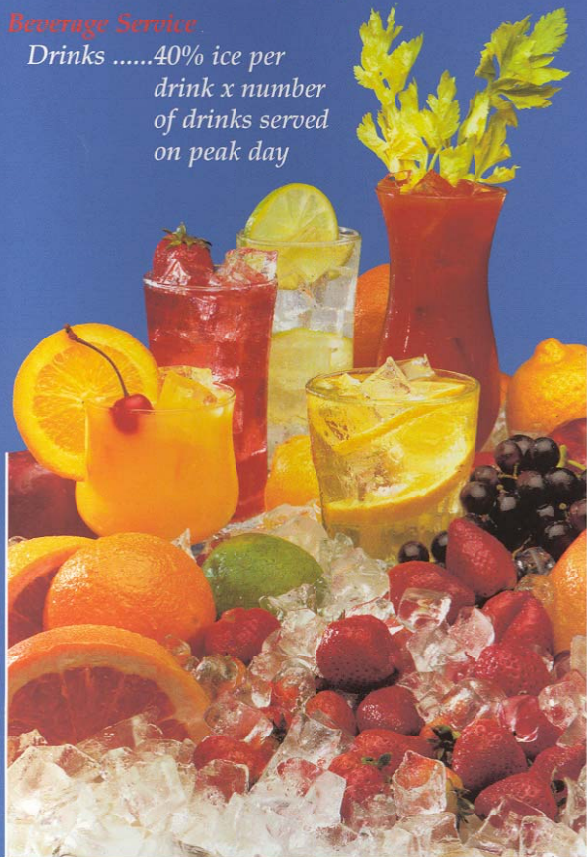
	Approximate Ice Needs Per Day
Foodservice	
Restaurant.....	1-1/2 lbs. per person
Cocktail.....	3 lbs. per person/seat
Water Glass	4 oz. per 10 oz. glass
Salad Bar	30 lbs. per cubic foot
Fast Food	5 oz. per 7-10 oz. drink
	8 oz. per 12-16 oz. drink
	12 oz. per 18-24 oz. drink

Lodging	
Guest Ice	5 lbs. per room
Restaurant.....	1-1/2 lbs. per person/seat
Cocktail.....	3 lbs. per person/seat
Catering	1 lb. per person

Healthcare	
Patient Ice	10 lbs. per patient
Cafeteria	1 lb. per person

Convenience Store	
Beverage	6 oz. per 12 oz. drink
	10 oz. per 20 oz. drink
	16 oz. per 32 oz. drink
Cold Plate	50% more ice per day
Packaged Ice	Lbs. per bag x bags sold per day

Beverage Service	
Drinks	40% ice per drink x number of drinks served on peak day

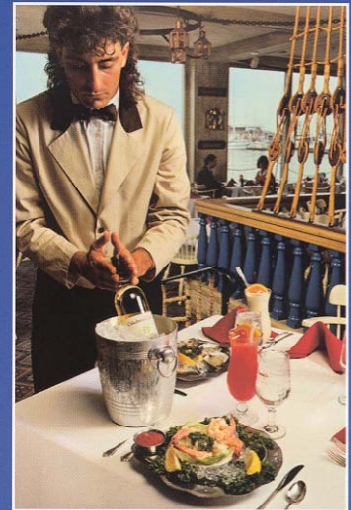


SIZING

In any business, ice needs are rarely uniform. For example, more ice is needed in summer than in winter and on weekends than on weekdays. Size your Manitowoc ice machine and storage bin to meet your peak needs.

Avoid sizing a new ice machine solely on the performance of your present equipment. The age and mechanical condition of your present ice machine may mislead you in determining the production capacity you need. Remember, surrounding air and incoming water temperatures affect the quantity of ice a machine produces.

Determine what these temperatures will be during times of peak usage, then verify your selection from the machine's production chart. The Ice Usage Guide will help you calculate your production requirements based on your peak needs. After calculating how much ice you expect to need, add 20% to accommodate future business growth. Taking the time to correctly size ice making equipment assures ample ice supply during peak periods.



INSTALLATION HINTS

Dimensions

Be sure components will fit through doorways, down halls, and into the installation space. Once installed, most ice machines must have at least 5" to 8" of clearance above, behind and on both sides. To double daily ice production without using additional floor space, contact your Manitowoc ice machine specialist for information about "stack-on" capability.

Location

Locate the ice machine in an area where the ambient air temperature stays between 35°F. and 110°F.

Connections

Electrical and water connections must be within 6' of the ice machine. Connections must meet local, state, and national codes.

Plumbing Requirements

- Ice machine must be connected to cold water supply.
- Water temperature: minimum 33°F, maximum 90°F.
- Ice making water pressure: minimum 20 psi, maximum 80 psi.
- Condenser water pressure (water-cooled models): minimum 20 psi, maximum 150 psi.
- Use separate drain lines for ice machine and storage bin.
- Ice machine drain tubing: 1/2" minimum I.D.
- Bin drain tubing 3/4" minimum I.D.
- Ice-making water drain and bin drain must be vented to the atmosphere. Do not vent condenser drain on water-cooled models.